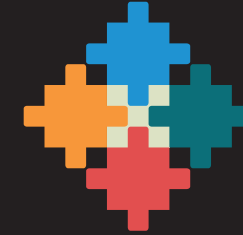




**InCommon**

Cultural and Educational Interventions  
for the Exercise of the Active Citizenship  
of Migrant Women

<http://www.documenta.es/web/incommon/>



**InCommon**

Cultural and Educational Interventions  
for the Exercise of the Active Citizenship  
of Migrant Women

**CULTURE IS A COMMON GOOD,  
PARTICIPATE, CREATE, BUILD CITIZENSHIP**

PARTNERS:



[www.documenta.es](http://www.documenta.es)



[www.dimitra.gr](http://www.dimitra.gr)



**EDIT·C**

EDUCATION & INFORMATION TECHNOLOGY CENTRE

[www.editc.eu](http://www.editc.eu)



[www.kist-consult.com](http://www.kist-consult.com)



[www.eapncantabria.wordpress.com](http://www.eapncantabria.wordpress.com)



**ΔΗΜΟΣ ΛΑΡΙΣΣΑΙΩΝ**

MUNICIPALITY OF LARISSA

[www.larissa-dimos.gr](http://www.larissa-dimos.gr)



[www.skepalem.wordpress.com/author/skepalem](http://www.skepalem.wordpress.com/author/skepalem)



[www.gainandsustain.eu](http://www.gainandsustain.eu)



This project has received funding from Asylum, Migration and Integration Fund (AMIF) from the European Commission, DG for Migration and Home Affairs under the grant agreement 776199.

This communication reflects only the views of the author, and the European Commission cannot be held responsible for any use which may be made of the information contained herein.



**EUROPEAN UNION**

**Asylum, Migration  
and Integration Fund**





**InCommon**  
Cultural and Educational Interventions  
for the Exercise of the Active Citizenship  
of Migrant Women

**CULTURE IS  
A COMMON GOOD,  
PARTICIPATE,  
CREATE,  
BUILD CITIZENSHIP**



**InCommon is a project** funded by the Asylum, Integration, Migration Fund (AMIF) of the European Commission and DG Home which consists of partners from Austria, Cyprus, Spain and Greece, **for the integration of refugees and migrants.**

The overall objective of the project is social inclusion through the cultural participation of migrant women. To achieve this aim, **three guidelines are established:**

- **Actions** for the empowerment of women through individual development and training on digital, interpersonal and civic skills and cultural expression.
- **Development** of a methodology for social inclusion through culture.
- **Creation** of networks consisting of communities, volunteers and cultural entities.

**InCommon is based on the fact that culture is a common good which is built with the participation of all the members of the local community.**

Participating in culture is to participate in the community, having a voice and being a part of it. To achieve this, we all need to have the tools and access to the resources that allow the fulfilment of this right.

We want to make these words a reality and create a meeting place available for migrant women where they can express themselves, develop and exercise active citizenship.

### **What do we offer?**

The participation as a volunteer in a group of migrant women and other cultural entities to facilitate and mediate the realization of cultural and educational projects promoted by the women themselves. We will offer you trainings on intercultural understanding and the necessary support to accompany the women in their development. Taking part in a local network for diversity inclusion and participation in the local culture.

### **What types of activities will be carried out?**

Activities related to **music, reading and writing, dance, arts and new technologies**, as well as **handcraft and folklore**.

### **Who can be a volunteer?**

Anyone who is interested in culture as a means of social inclusion and specially those cultural mediators, social workers, cultural managers, cultural businesses leaders, creators, teachers, art professionals, etc. who want to share knowledge and share new experiences in the field of culture and citizenship.

**If you are interested, feel free to participate in the information session, where we will give you more information about the project.**

**DATE AND PLACE:**

You can also get in contact with the person responsible for the project in your country. Or download the project fiche in the following link:  
<http://www.documenta.es/web/incommon/InCommon.pdf>